



THE
**RALEIGH
GROUP**



1st Floor Reception @421 N. Harrington Street



2nd Floor @421 N. Harington Street

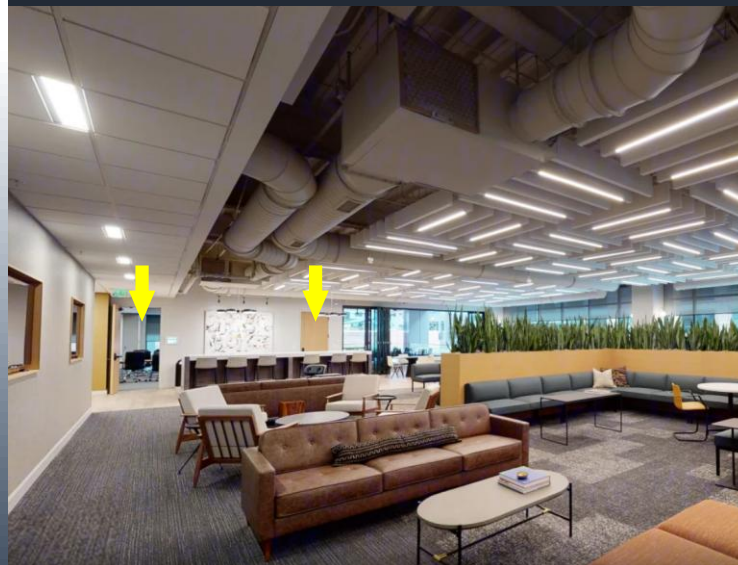
Glass Conference Room

16 Seats



Small Conference Room

26 Seats

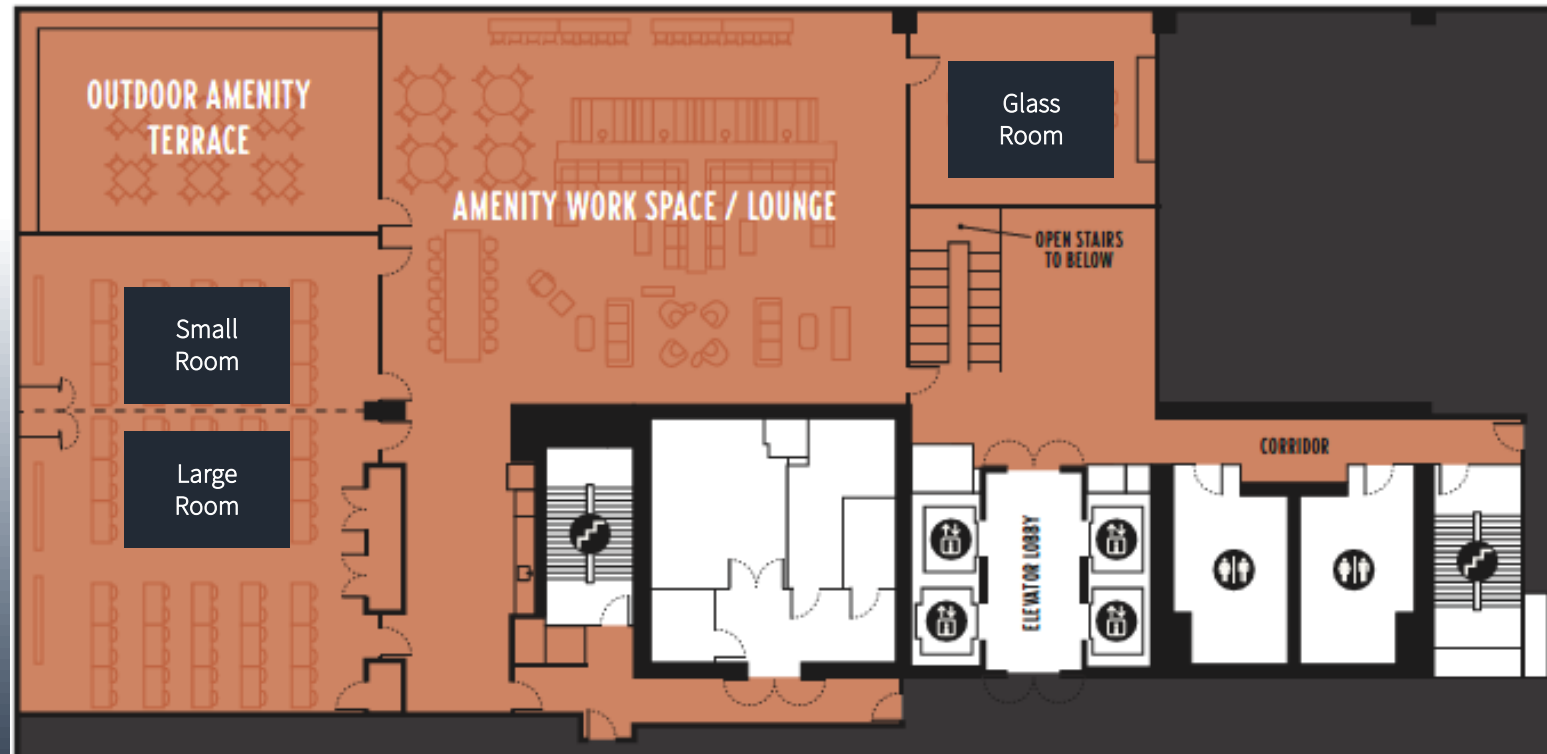


Large Conference Room

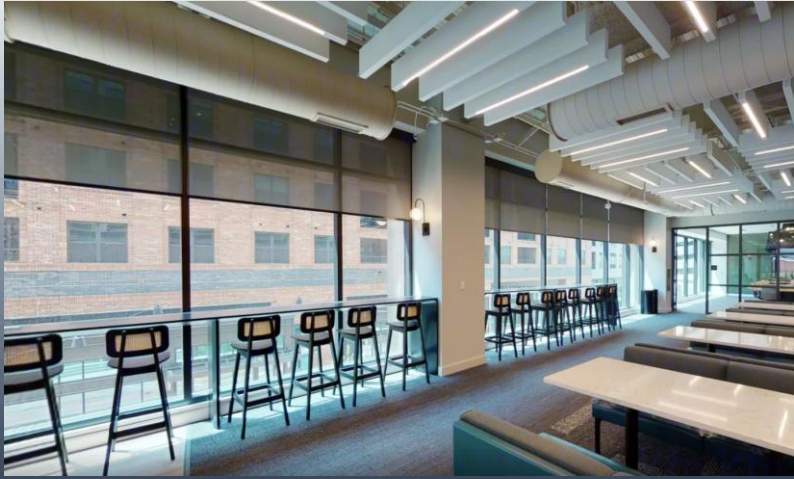
60 Seats



2nd Floor @421 N. Harington Street



Common Area



Local Amenities

ENGAGING OUTDOOR DINING & GATHERING PLACES

- 40,000 square feet of street-level retail with active, pedestrian-friendly sidewalks and open event-oriented courtyard
- Featuring downtown Raleigh's first Publix grocery store and dynamic local-owned hotspots
- Integrated covered parking
- Enriched by highly collaborative work environments, emphasis on lifestyle amenities and residents within steps
- Connectivity to downtown Raleigh and the greater Triangle area

Madre Publix. *The Crumkleton*

Hone-Sharpen TUCKER STREET DINER

MIDWOOD SMOKEHOUSE MI KIAN House of Dogs EST 2015 JETSET MODERN PILATES MORELLA

NEIGHBORHOOD GOOD TIME BAR DOSE yoga + smoothie bar *barri*

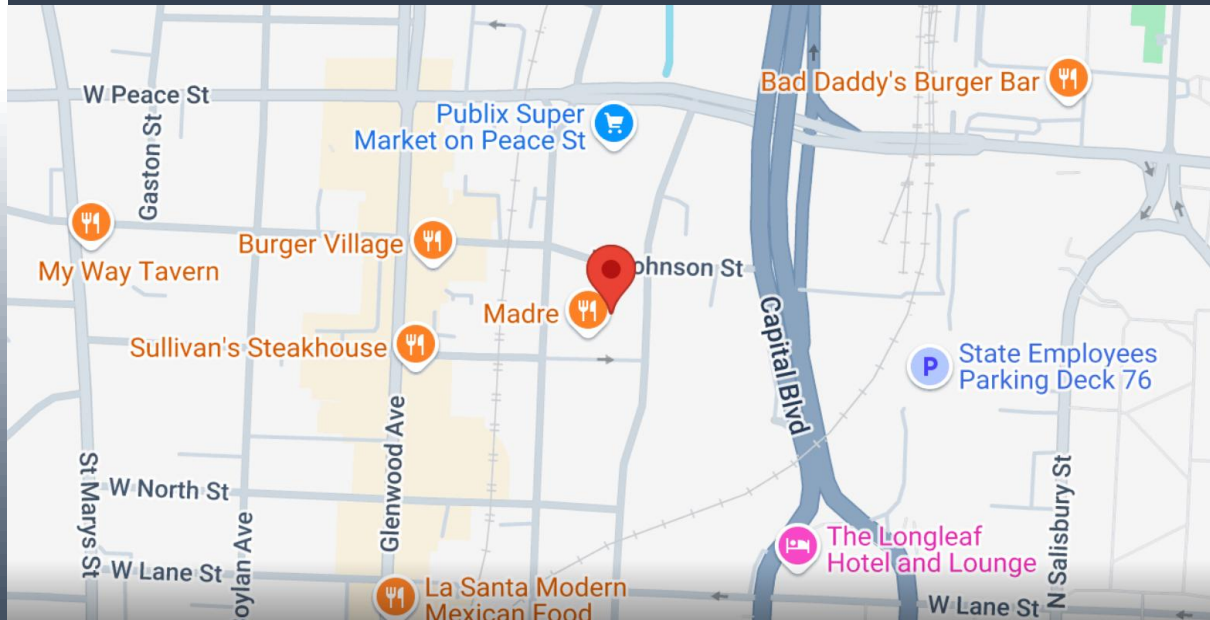
FastMed. HUSH HAIR LASH BROW NOIRE LA CUCINA

Directions

421 N. Harrington Street, Raleigh, NC

[Google](#)

[Waze](#)



Parking

DISTRICT

Glenwood South

DESCRIPTION

Hourly Rate: \$3/first hour, \$2/next two hours, \$2/hour every hour after, \$18/max
Fri and Sat 7 pm-3 am \$20/flat plus \$2/hr every hr after 3 am

Monthly Rate: \$125

For more parking information, contact:

The Car Park
(919) 833-7522
www.TheCarPark.com

411 N. Harrington Street, Raleigh, NC 27603





John Hardin, President

john@theraleighgroupnc.com

Will Morgan, Managing Partner

will@theraleighgroupnc.com

Sue Ann Swift, Vice President

sueann@theraleighgroupnc.com

Madison Alligood, General Counsel

Madison@theraleighgroupnc.com

Mary Selvidge, Chief of Staff

mary@theraleighgroupnc.com

